



DINOLIFT
UP TO THE JOB

Trust us
to reach higher.

DINO® TRAILERS

TB/XTB SERIES

- **Battery powered TB/XTB series**
- **Working heights TB 13.5 – 18.0 m**
- **Working heights XTB 16.0 – 21.0 m**



DINO® 135TB / 150TB / 180TB / 160XTB / 180XTB / 210XTB

Standard features in all DINO TB/XTB-models:

- Driving system
- Basket rotation 90°
- Powerful charger, can be operated even when charging the batteries
- Continuous rotation of the boom
- Easy to use, clear and informative controls (pictures 1 and 2)

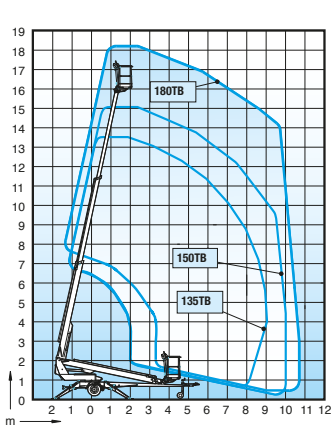


Options available for all DINO TB/XTB-models:

- 2kW generator (Honda) + bracket (picture 3)
- Cable steering for driving system *
*standard for XTB series (picture 4)
- Outrigger limit switch indicator



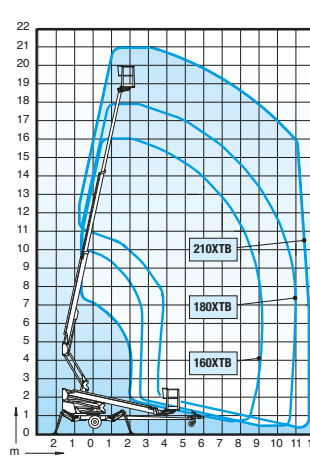
Technical data for DINO TB-models:



Maximum outreach with 80 kg

	135TB	150TB	180TB
Max. working height	13.50 m	15.00 m	18.00 m
Max. platform height	11.50 m	13.00 m	16.00 m
Max. outreach	9.10 m	10.00 m	10.70 m
Support width	3.8/4.2 m	3.8/4.2 m	3.8/4.2 m
Lifting capacity	215 kg	215 kg	215 kg
Basket size	0.7x1.3 m	0.7x1.3 m	0.7x1.3 m
Boom rotation	cont.	cont.	cont.
Basket rotation	90°	90°	90°
Boom control	proport.	proport.	proport.
Transport length	5.94 m	6.43 m	7.41 m
Transport width	1.78 m	1.78 m	1.78 m
Transport height	2.14 m	2.14 m	2.14 m
Weight	1765 kg	1835 kg	1945 kg
Driving system	std	std	std
AC-socket	std	std	std
Batteries 235 Ah	std	std	std
DC Motor	std	std	std
Gradeability	25%	25%	25%

Technical data for DINO XTB-models:



160XTB maximum outreach with 215 kg
180XTB and 210XTB maximum outreach with 80 kg

	160XTB	180XTB	210XTB
Max. working height	16.00 m	18.00 m	21.00 m
Max. platform height	14.00 m	16.00 m	19.00 m
Max. outreach	9.10 m	10.90 m	11.70 m
Support width	3.8/4.2 m	3.8/4.2 m	3.9/4.3 m
Lifting capacity	215 kg	215 kg	215 kg
Basket size	0.7x1.3 m	0.7x1.3 m	0.7x1.3 m
Boom rotation	cont.	cont.	cont.
Basket rotation	90°	90°	90°
Boom control	proport.	proport.	proport.
Transport length	5.99 m	6.57 m	7.80 m
Transport width	1.80 m	1.80 m	1.93 m
Transport height	2.29 m	2.29 m	2.29 m
Weight	2175 kg	2235 kg	2590 kg
Driving system	std	std	std
AC-socket in the basket	std	std	std
Batteries 235 Ah	std	std	std
DC Motor	std	std	std
Gradeability	25%	25%	25%



DINOlift

Dinolift Oy
Raikkolantie 145 • FI-32210 LOIMAA • FINLAND
Tel. +358 (0)20 1772 400 • Fax +358 (0)2 76 27 160
www.dinolift.com

Dinolift Oy is a Finnish company that manufactures and sells high-quality DINO aerial work platforms since 1974.

DINO platforms allow you to work above ground safely and effectively, while offering an enjoyable user experience from ground up. DINO lifts have been sold to more than 40 countries around the world, with exports accounting for 75% of production. The company's main markets are in the Nordic countries and in northern Europe.

Technical specifications are subject to change without prior notice.